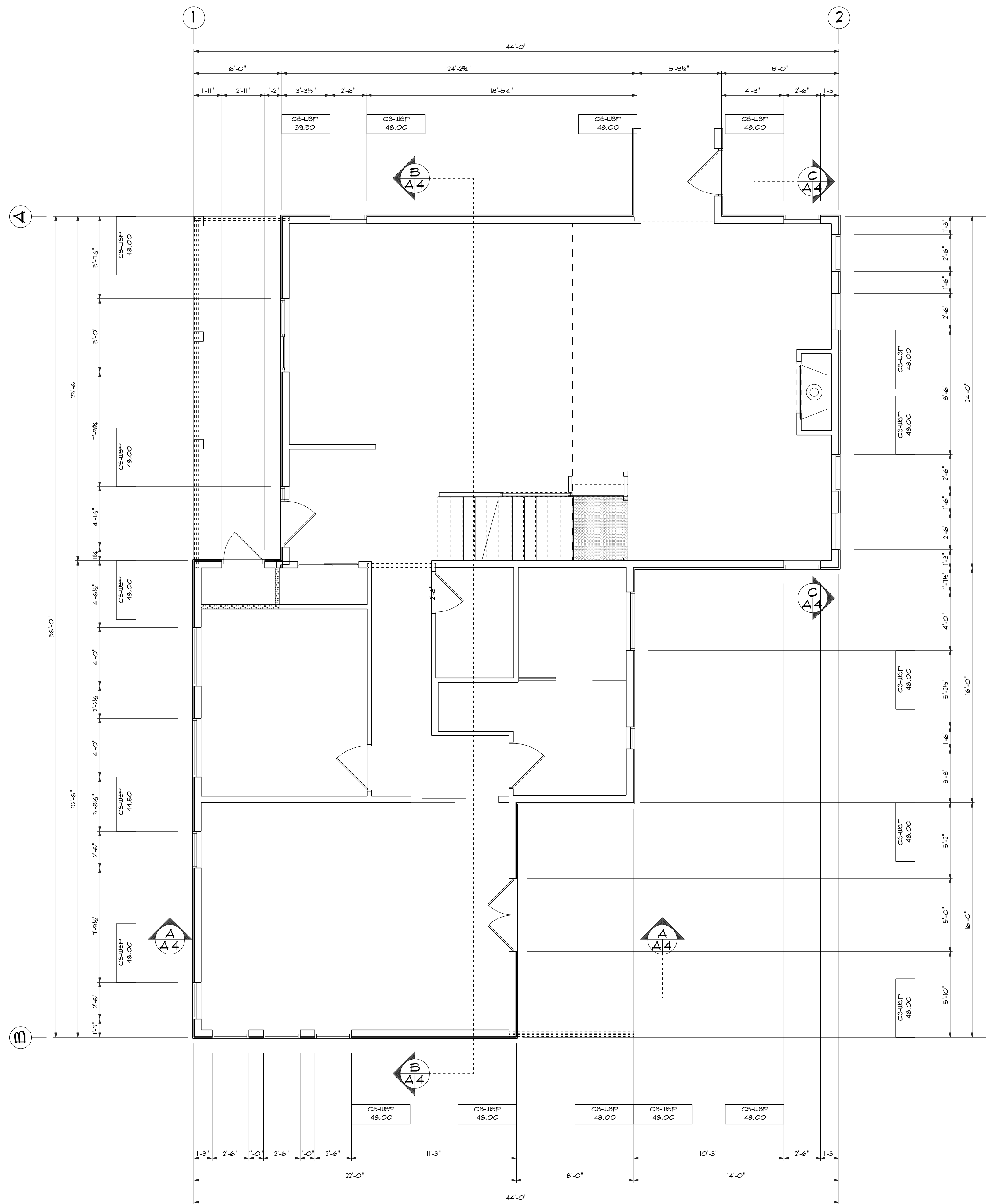


FIRST FLOOR WALL BRACING SCHEDULE													
WALL BRACE LINE	BRACE MATERIAL	BRACE METHOD	BRACE LINE SPACING	REQUIRED BRACE UNIT LENGTH	WIND EXPOSURE FACTOR	WALL HEIGHT FACTOR	EAVE TO RIDGE FACTOR	DRYWALL OMISSION FACTOR	WIND FACTOR TOTAL	TOTAL BRACE UNIT LENGTH (FT)	BRACE UNITS PROVIDED	MAXIMUM OPRNG. HGT.	DETAIL
A	1 5/32" OSB SHEATHING-CONTINUOUS WOOD SHEATHED PANEL (CS-WSP)	CONTINUOUS	44'-0"	14.5	1.00	0.90	1.00	1.00	1.24	30.31'	15.29'	1'-0"	
B	1 5/32" OSB SHEATHING-CONTINUOUS WOOD SHEATHED PANEL (CS-WSP)	CONTINUOUS	44'-0"	14.5'	1.00	0.90	1.00	1.00	1.24	34.00'	20.00'	1'-0"	
1	1 5/32" OSB SHEATHING-CONTINUOUS WOOD SHEATHED PANEL (CS-WSP)	CONTINUOUS	56'-0"	17.0'	1.00	0.90	1.00	1.00	1.24	33.88'	19.11'	1'-0"	
2	1 5/32" OSB SHEATHING-CONTINUOUS WOOD SHEATHED PANEL (CS-WSP)	CONTINUOUS	56'-0"	17.0	1.00	0.90	1.00	1.00	1.24	35.50'	20.00'	1'-0"	

CONNECTION CRITERIA - 6D COMMON NAIL OR 8D BOX NAIL
 2 1/2" LONG X .113" DIA. (MIN.)
 6" O.C AT PANEL EDGE
 12" O.C AT PANEL FIELD



MAIN FLOOR WALL BRACEPLAN

SCALE: 1/4" = 1'-0" AREA = 1764 SQ. FT.

